



TIME FOR A NEW KIND OF HEATING



SHYN.

**The full-fledged primary heating
with radiant heat technology.**

 **shyn** STOP HEATING.
START SHYNING.

CONTENTS



THIS IS SHYN 07
Product & Innovation

HOW SHYN HEATS 09
Effectiveness & Well-Being

SHYN IS SUSTAINABLE 13
Environmentally friendly & Future-proof

SHYN IS AFFORDABLE 15
Costs & Efficiency

SHYN IS HEALTHY 17
Health & Building Biology

SHYN IS SIMPLE 21
Installation & Setup

23 SHYN IS FAR AHEAD
Advantages & Heat Pump Comparison

27 SHYN IS SMART
Smart Home & Connectivity

29 SHYN IN DETAIL
Engineering & Versatility

35 SHYN IS HEATING HERE
Projects & References

37 SHYN AT A GLANCE
Overview & Advantages

39 HOW TO REACH SHYN
Contact details & Representatives

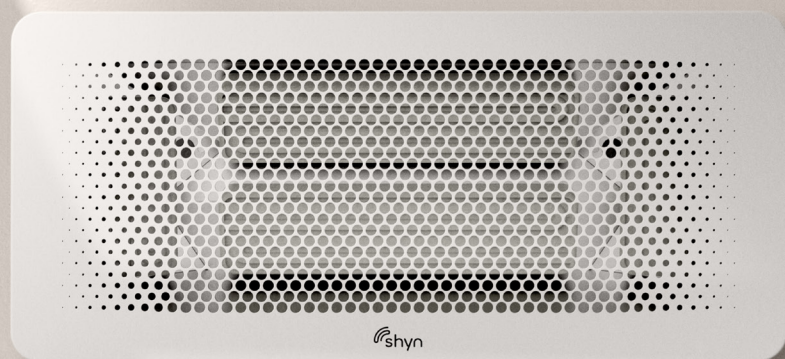
A close-up photograph of a child's feet wearing blue denim jeans and colorful striped socks (green, yellow, blue, and orange). The feet are standing on a white radiator. The background is a light-colored wall. The right side of the image features a vertical yellow bar.

WHY RELY ON YESTERDAY'S HEATING FOR TOMORROW'S WARMTH?

**SHYN is the first
full-fledged primary
heating with infrared
technology.**



Why only
improve the way
we heat
when you can
reinvent it?



SHYN IS NEW, SIMPLE AND SUSTAINABLE

SHYN is the revolution in infrared technology. And not a supplementary source but the first full-fledged primary heating with radiant heat technology. SHYN is compact, has smart connectivity and is powerful. Thanks to patented 3-D heating technology, one unit is enough to provide up to 75 m² with healthy heat.

As new as SHYN is, the principle has already been successful for 4.6 billion years:

similar to sunshine, heat radiation acts directly on the skin and objects, making SHYN's heat highly efficient and wonderfully pleasant – just like sunbathing.

Due to its unique design, SHYN has an exceptionally high radiation efficiency. It combines new infrared technology with state-of-the-art smart home connectivity (IoT) to open up whole new possibilities.

As a primary system, it will drive the energy transition forward. It will help users save money and help us become less dependent on conventional energy sources.

So if now is not the time for SHYN, when will it be?





SHYN WARMS DIRECTLY, NATURALLY AND PLEASANTLY

Heating has always worked like this: A radiator heats the air, the air circulates through the room, and very gradually, it warms people up. Things work differently with SHYN: switch it on and feel pleasantly warm all over. Because the warmth is there immediately.

The reason: SHYN produces infrared waves modelled after the sun. The waves meet the skin and warm the body. They also heat the objects in the room, the floor and the walls. All this with extremely high energy efficiency and without the irritating dust whirling of conventional systems.

Depending on the insulation of the building, one device is enough to provide heat for up to 75m². And the fact the waves also penetrate the floor and masonry ensures a pleasant indoor climate while preventing dampness and mould growth. As you can see: not only is SHYN pleasant for people and their feet but for the whole house.



Why heat the air first when you want warm feet straight away?



**WHY WARM
THE WHOLE
PLANET
WHEN
YOU CAN
DO THINGS
MORE
SUSTAINABLY?**

**SHYN is
climate-friendly,
sustainable and
cost-effective.**



Why keep heating
the same old way
if we want
a heat transition?



SHYN HEATING IS SUSTAINABLE IN MANY WAYS

One thing is clear: we need the energy transition. And we need it as soon as possible. Fossil fuels are a thing of the past; today belongs to renewable energies. But the energy transition can only succeed if we also push ahead with the heating transition. It is high time that we start heating in a new way.

As a primary heating system, SHYN can contribute to this revolution because it is sustainable on several levels.

First, through its superior efficiency! Due to the radiators' patented design and surface temperature, SHYN's radiation efficiency is significantly higher than any previous infrared heating system.

Second, by running SHYN on photovoltaic power, its operation is 100% emission-free.

And third, SHYN is Made in Germany – which makes it climate-friendly even before it gets warm. Short delivery routes already ensure a particularly low CO₂ footprint throughout production and logistics.





SHYN PAYS OFF IN THE SHORT AND LONG TERM

Electric energy, combined with an unrivalled high radiation efficiency and three-dimensional heat distribution - that's the combination that makes heating with SHYN so affordable.

But the system's unbeatable advantage really shines through in the investment phase. Because SHYN is much more affordable than any heating system, which has to be amortized over decades.

SHYN requires neither a central heat-generating unit nor a complex piping system throughout the house. There are no costs for fuel storage nor network connection fees for gas or district heating. There are no maintenance costs, no bill for the chimney sweep and no complicated and expensive planning process.

All you get with SHYN is comfortable warmth – by simply pressing a button.

Why keep
burning money
when you can
also heat
with electricity?





SHYN IS HEALTHIER FOR PEOPLE AND BUILDINGS

Not only does SHYN make you warm, but it also makes for a healthy indoor environment. Unlike convection heating, it does not move the air in the room. And without circulation, no dust is whirled up - to the delight of allergy sufferers especially.

The otherwise regular air circulation has another disadvantage. Despite the heating, walls remain relatively cool and absorb humidity from the room. The result: an increased risk of mould. Quite unpleasant and dangerous for one's health.

Quite different with SHYN. The long-wave infrared rays penetrate the walls and keep them dry. At the same time, the humidity in the room remains balanced. The indoor environment is much more pleasant, mucous membranes do not dry out, the risk of catching colds decreases, and itchy eyes simply don't occur.

As you can see: SHYN even makes your health shine.

Why shouldn't the heater also take care of your health?





WHY COMPLICATE HEATING WHEN IT CAN BE EASY?

**SHYN provides
more ease and
greater flexibility
in heating.**



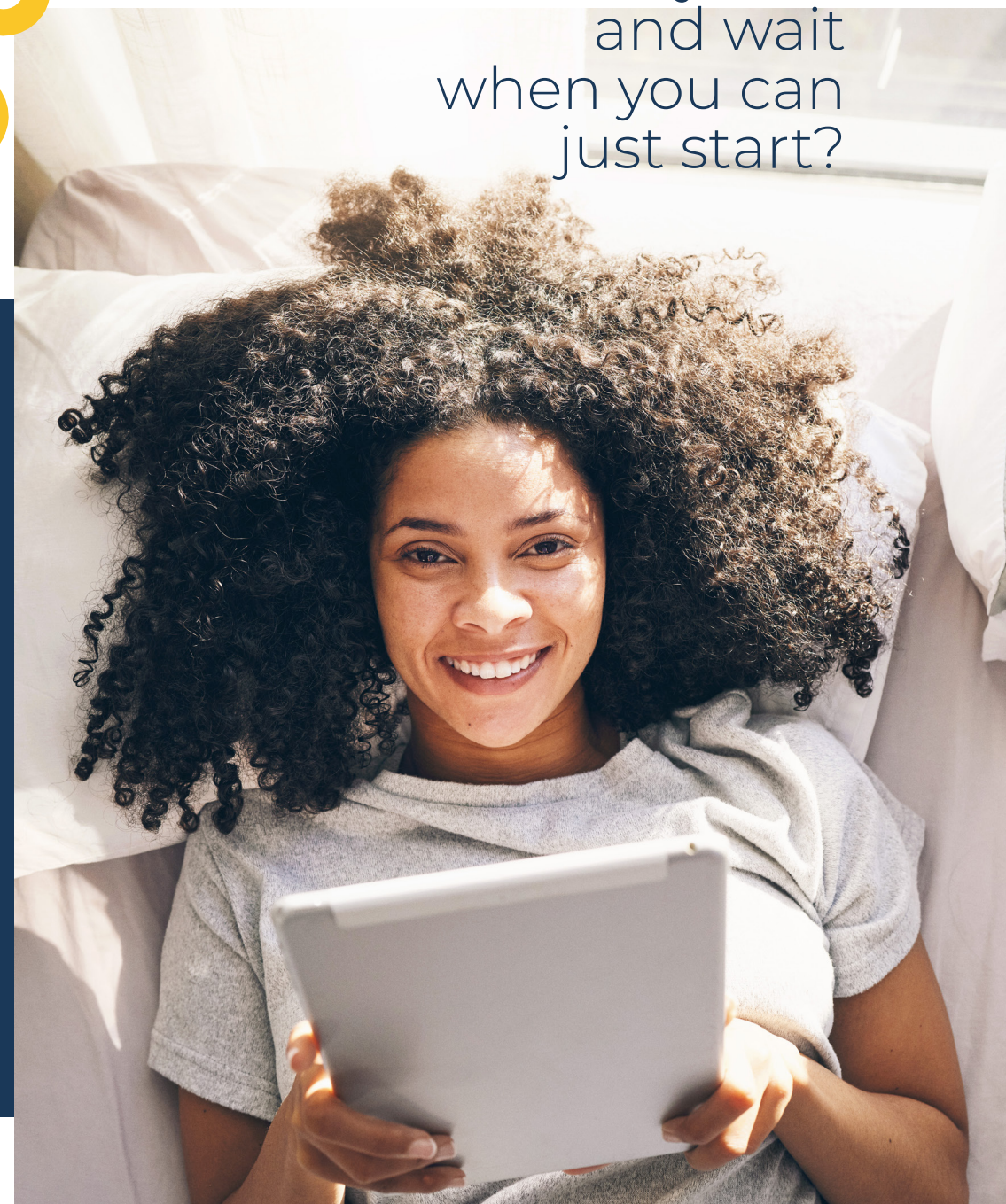
Why wait
and wait
when you can
just start?

SHYN IS FAST, EASY AND INDEPENDENT

Installing a primary heating system has never been so easy. Enjoy a quick delivery, unpack it, attach the wall bracket, screw SHYN on, plug it in, and you're done. The unit is up and running immediately, filling the room with pleasant, healthy warmth. We call it Plug & Heat – and it's as easy and affordable as it sounds.

Should SHYN be used in a new construction building, the planning phase can already ensure coordination between the electrical installation and the heating system. SHYN can be installed as a surface-mounted unit or as a wall-mounted unit.

And maintenance? This brings us to another unbeatable advantage: While all other systems, including heat pump heating, require regular professional servicing, SHYN is 100% maintenance-free. All components are made of robust, wear-resistant materials, so we offer a 7-year warranty. And with a very good feeling about it.





Why dig for heat
when it already comes
from the socket?

SHYN IS AHEAD IN COMPARISON

As the first primary heating system with infrared technology, SHYN provides comfortable and healthy heat. And when it comes to cost efficiency? There, too, we have a radiant winner – even in comparison with the popular heat pump heating system.

Okay, let's talk about money: with comparable operating costs, SHYN scores significantly higher in terms of investment costs.

After all, its purchase only requires you to dig a third to a quarter as deep into your pocket. Mainly because SHYN always produces heat exactly where it is needed, which means there is no need for an expensive and inefficient heat distribution system.

Other advantages: SHYN takes up less space, incurs no maintenance costs and has a longer life expectancy. It also increases heating efficiency by adjusting to the current heat demand much faster and more precisely than sluggish convection heating. There is virtually no overheating or underheating of the room.



**WHY
SHOULDN'T
A HEATING
SYSTEM
BE SMARTER
THAN MERELY
EMITTING
HOT AIR?**

**SHYN makes homes
and heating smarter.**



Why shouldn't a smart decision pay off for everybody?



SHYN IS SIMPLE, SMART AND ECONOMICAL

With SHYN, a home is not only cosy and warm but also really smart. And it's not just residents who are happy about this, but also property managers.

SHYN can be easily integrated into smart home or IoT systems and thus be precisely switched and controlled according to demand. Power consumption, room temperatures and air exchange rates can also be recorded in real time. This helps the system react to faults before they become a problem.

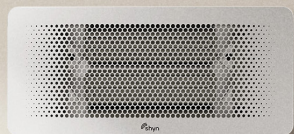
Since SHYN is designed to be user-friendly, the whole thing is effortless and 100% intuitive. One interface controls all integrated devices – online and from anywhere, such as from the comfort of your couch via smartphone and tablet or with your own stationary touch panel or computer.

As a result, residents always have all information in view and everything under control. Simply pressing a button can quickly and easily run rooms separately and display the most important data. Thanks to SHYN's IoT platform, property managers, in particular, will be delighted with decentralised control, remote maintenance and a precise overview of individual unit consumption – even in a customised design if preferred.

SHYN saves all users a lot of time and money in such a smart way.



Why shouldn't
an energy-saving
heating system
also save space?



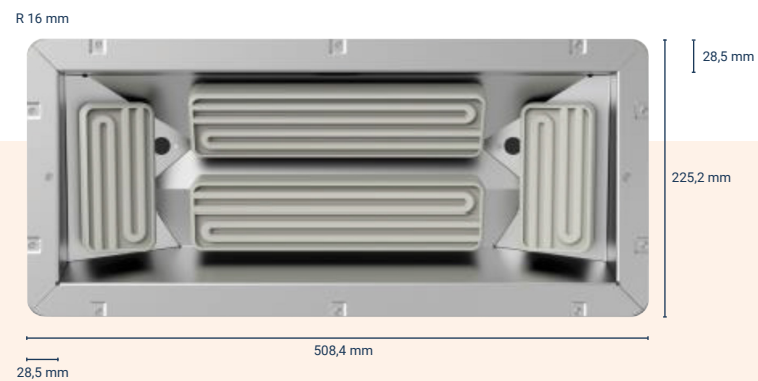
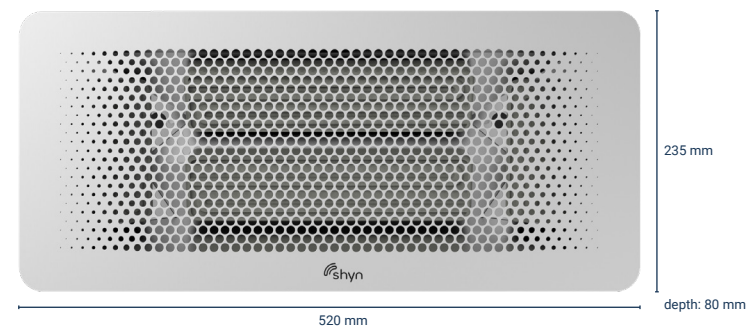
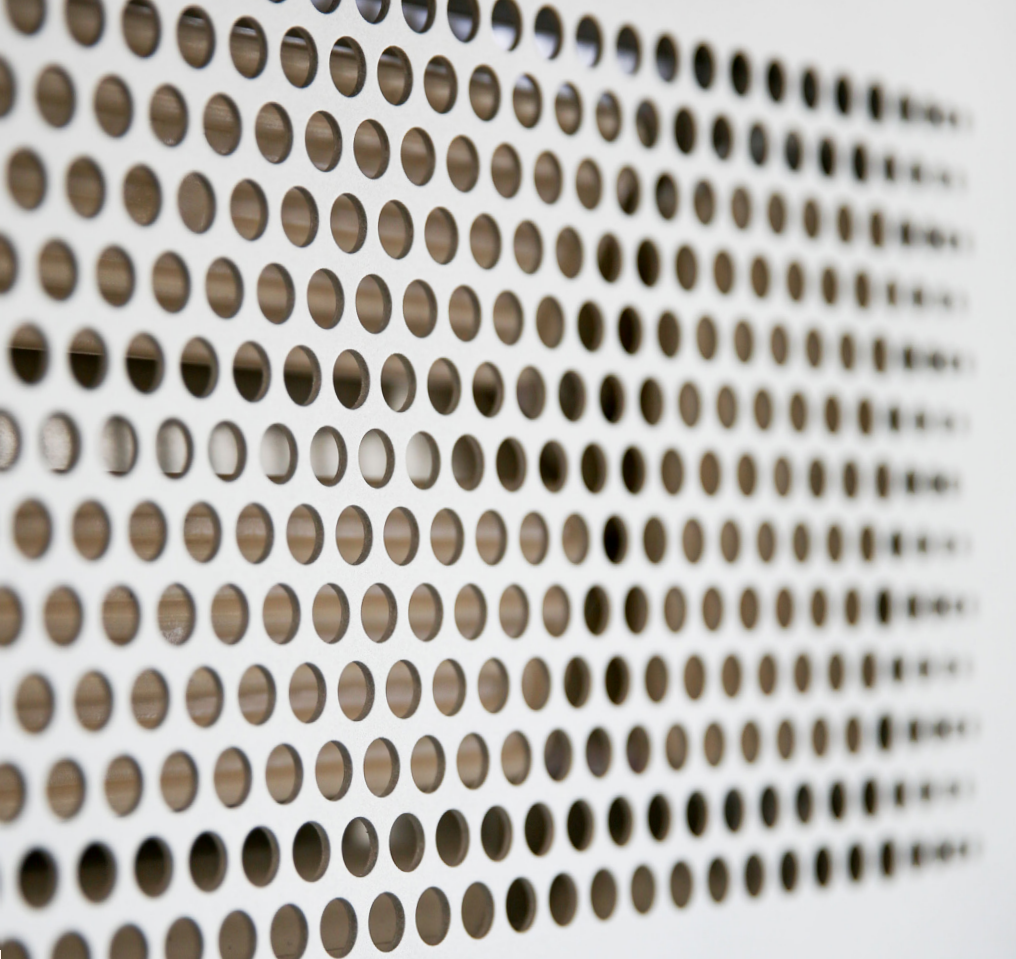
SHYN IS SLEEK, POWERFUL AND COMPACT

It's incredible that heat can be so cool. You see, a product designer developed SHYN's look. Their task: create a device that integrates into any modern interior, to be inspired by the look of smart consumer electronics.

This is how we made SHYN's cover, now available in three variants.

Form follows function – and that applies here, too. Because a surface of only 52 by 23 centimetres hides the infrared technology, which has nothing in common with the familiar infrared panels from the hardware store. The patented geometry of the four panels allows a 3-D heating effect, which warms not only the skin and walls but also the floor. No need for additional underfloor heating.

Of course, SHYN is certified by TÜV and carries the GS seal for tested safety. For an extra bit of feel-good.



Currently there is 1 model on the market with 3 front variations and 2 case color variations.

Outer dimensions: 520 mm x 235 mm x 80 mm

Case front:

- Hole pattern standard model
- Honeycomb pattern (on request)
- Stripe pattern (on request)

Case colors:

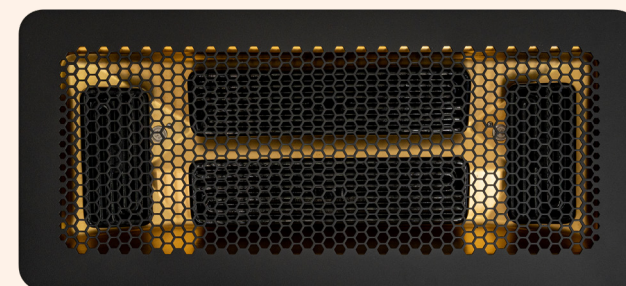
- Silver matted
- Black matted

Reflector plate inside:

- Aluminum
- Gold

Ceramic inside:

- White
- Black



Black matte honeycomb pattern case with gold reflector plate and black ceramic interior

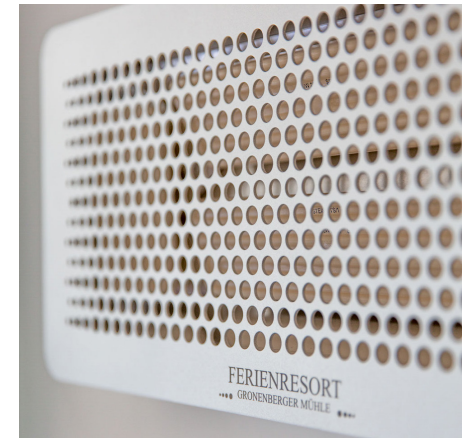


**WHY KEEP
HEATING
AS IN
THE PAST
WHEN OTHERS
ARE ALREADY
SHINING?**

**SHYN shows us
what it's capable of:
comfortable warmth
and radiant faces.**



Why not
heat green
and economically
in the green?



SHYN FITS THE CONCEPT AND SAVES MONEY

Amid the impressive nature of the Pönitz lake district is the vacation resort „Gronenberger Mühle“. Its name comes from the heritage-protected water mill dating back to the 17th century, which today forms the

resort's core and even generates some of the electricity needed there.

For a perfect nature experience, guests stay in 32 modern design wooden houses equipped with all comforts. SHYN provides cosy and healthy heating.

A web-based solution for running SHYN allows central control of all devices, simplifies handling and saves costs - removing some of the hassles of servicing the Gronenberger Mühle.

ALL THE ADVANTAGES OF SHYN AT A GLANCE



natural

SHYN works like natural sunlight. That's why it keeps you comfortably warm.



sustainable

Highest efficiency, paired with „Made in Germany“ for short transport distances.



infrared

The infrared light warms people, objects, walls and floors directly.



convenient

Simply press a button and SHYN's heat is there. No more uncomfortable waiting.



healthy

No air circulation and no moisture on the walls. Only healthy heat.



independent

SHYN makes people independent from gas, oil, district heating and maintenance intervals.



easy

Plug and Heat – simply plug the unit into the outlet and go.



efficient

SHYN heats with unrivalled efficacy due to an outstandingly high radiation efficiency.



smart

You can control SHYN conveniently from your smartphone or tablet.



emission-free

SHYN is highly efficient and powered by electricity, ideally with solar energy.



modular

SHYN integrates easily into any smart home infrastructure.



advantageous

Similar operating costs as the heat pump – at only 1/3 of the purchasing costs.

NOW IT'S YOUR TIME TO SHYN.



Thorsten Jürries
Sales and Marketing

+49 1522 8383 129
thorsten.juerries@valueneers.de



Stefan Schaupp
Technical Sales and Distribution

+43 676 6064 960
stefan.schaupp@valueneers.de




www.shyn-on.me



shyn

www.shyn-on.me

VALUENEERS GmbH
Lüneburger Str. 14 B
21394 Kirchgellersen

Subject to technical changes,
design changes and errors.
All trade names and trademarks
used are the property of their
respective owners.

Copyright information:
Photos: © shyn

Reprints, including excerpts,
are subject to the publisher's
approval.

